

EmiratesGreen

الامارات الخضراء لتجارته المعدات الكهربائية والميكانيكية
EmiratesGreen Electrical & Mechanical Trading Est.

P.O. Box: 110507 | Phone: +971 2 491 0 757 | Abu Dhabi, U.A.E
Email: solar@emiratesgreen.com | Web: www.emiratesgreen.ae



SP PRO Firmware Update Procedure

Introduction

This procedure provides instructions for updating the SP PRO operating program or Firmware. This only needs to be performed if you have been specifically requested to update the firmware. The firmware is updated using SP LINK and can be updated either on-site or remotely.

Requirements

Install the latest version of SP LINK **BEFORE** updating the SP PRO firmware.

The latest SP LINK is available at <http://www.selectronic.com.au/splink> and it includes the most recently released firmware.

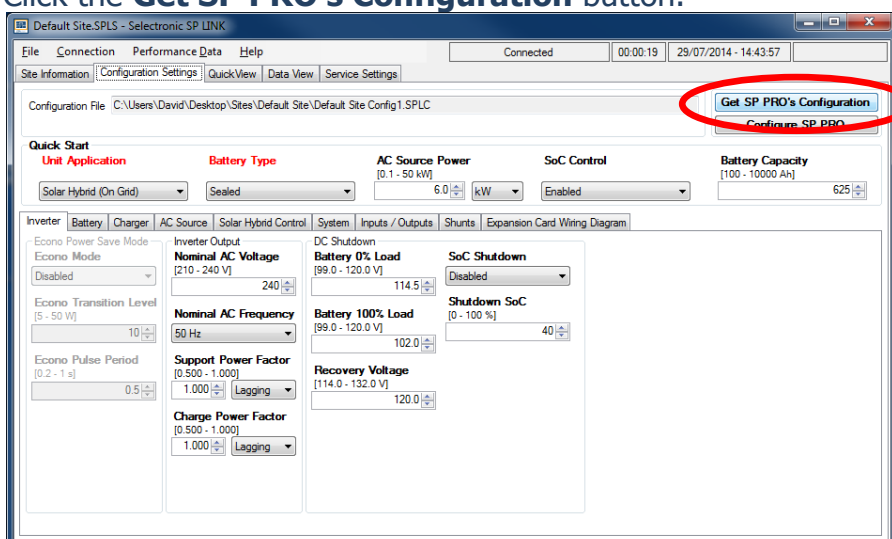
State of Charge (SoC)

The SP PRO defaults to 85% SoC after every restart or reset. The SP PRO must reset after the update for it to use the new firmware. It is a good idea to record the present value of SoC so that afterwards the SoC can be re-entered using the Reset SoC function under Service Settings.

Before updating firmware

After the latest version of SP LINK has been installed on your PC start SP LINK and connect to the SP PRO. It is recommended that the current configuration settings be downloaded from the SP PRO inverter and saved to your site file before updating the firmware. This can be done by:

1. Connect to the SP PRO.
2. Select the **Configuration Settings** tab.
3. Click the **Get SP PRO's Configuration** button.



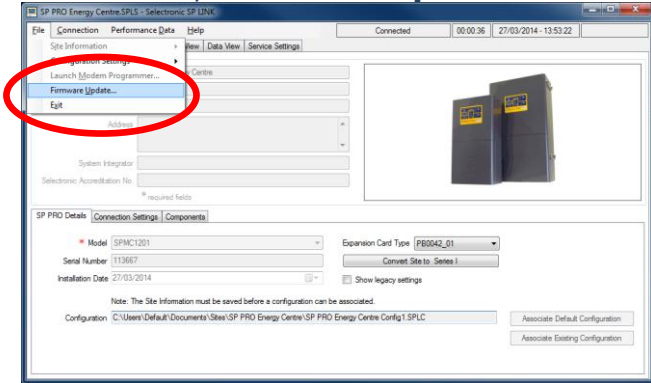
4. Save Configuration settings. ("File", "Configuration Settings", "Save")

SP PRO Interactive Inverter Charger Technical Note



Firmware Update Procedure

Start SP LINK and connect to the SP PRO.
Select "File", "Firmware Update..."

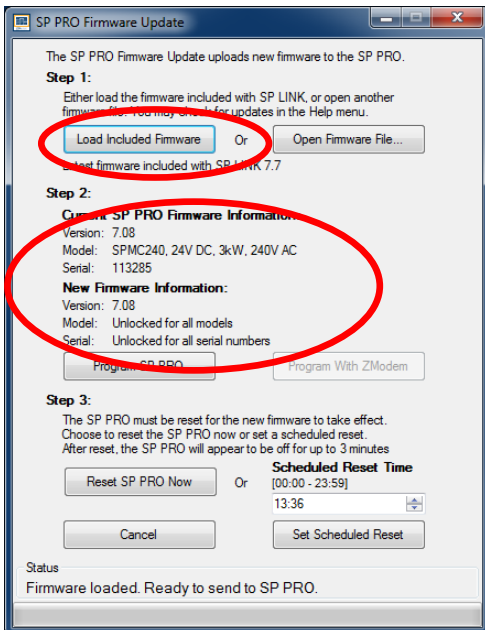


The SP PRO Firmware Update window will appear and show the Current SP PRO Firmware Information.

STEP 1

- You can load the latest firmware, or select one from file. In most cases, we suggest you click **Load Included Firmware**.

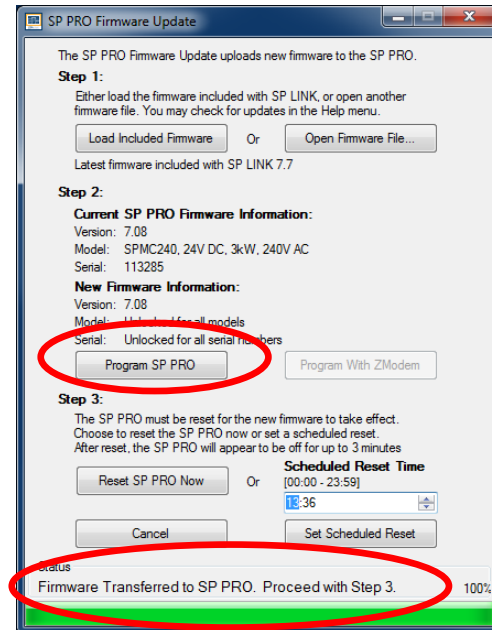
The new firmware details will be displayed next to the current details.



STEP 2

- Click **Program SP PRO**.

SP LINK will begin the update process. There are several stages and this can be monitored in the **Status** area.



When complete, **Status** will indicate "Firmware Transferred to SP PRO. Proceed with Step 3."

STEP 3

WARNING: AC LOAD INTERRUPTION

The SP PRO must be reset to complete the firmware update. During the reset AC LOAD will be interrupted. There are two options:

Option 1 – Immediate Reset

- Click **Reset SP PRO Now**.

The SP PRO will reset and the Firmware Update window will close.

SP PRO will appear to be off for a further 3 minutes and revert to Idle mode.

Firmware Update is now complete.

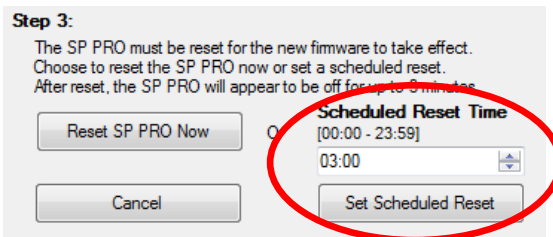
SP PRO Interactive Inverter Charger Technical Note



Option 2 – Scheduled Reset

- Enter a time into **Scheduled Reset Time** when a brief interruption is most convenient.

The SP PRO uses 24 hour time. In this example, we have selected 3:00am.



- Click **Set Scheduled Reset**.

The SP PRO is now set to reset at that time and will continue to operate normally.

(If you change your mind about the scheduled reset time, simply set a new value which will override the first. Or if you click **Reset SP PRO Now**, the inverter will be reset immediately and any scheduled reset will be disabled.)

- Click **Close**.

At the scheduled time, the SP PRO will reset, appear to be off for 3 minutes, then resume operation as it was prior to being reset.

Firmware Update is now complete.

After updating firmware

Start SP LINK and connect to the SP PRO. Load the saved Configuration file into SP LINK.

Make any required changes to your configuration settings.

Note: If you are updating from a version of SP PRO firmware that is less than 7.00 to a version of firmware that is 7.00 or greater please be aware that some settings will no longer be active and reprogramming Configuration Settings may be required. For full details see the document "Migrating Legacy Settings" in the Help menu within SP LINK.

Program your previously saved configuration settings back into the SP PRO using the **Configure SP PRO** button.

Reset SoC to the required level in the Service Settings tab of SP LINK.

Additional Information

Selectronic web site – <http://www.selectronic.com.au> or contact the Selectronic Sales Team.